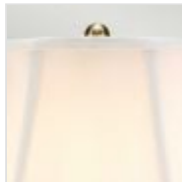
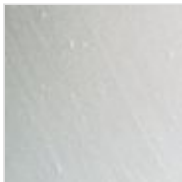


GOLD-THISTLE-TL

Gold Thistle 1 Light Table Lamp - Gold

DETAILS

BRAND	Elstead Lighting
FAMILY	Goldthistle
SUITABLE LOCATION	Interior
GUARANTEE	General 2 Year Guarantee
FINISH	Gold
FITTING HEIGHT	580mm
WIDTH	360mm
POWER SOURCE	Plug
VOLTAGE	220-240v 50hz
MAXIMUM WATTAGE	60W
NUMBER OF LAMPS	1
SOCKET	E27
INTEGRATED LED	Yes
CLASS	Class I
BUILD MATERIALS	Porcelain
SHADE MATERIAL	Faux Silk
DIMMABLE FITTING	Compatible With Dimmable Smart Lamps
PRODUCT WEIGHT	2.62kg
BOX DIMENSIONS	38 X 38 X 60cm
BOX WEIGHT	3.08 Kg

**PRODUCT DETAILS**

Chinese Porcelain table lamp with a Gold floral pattern over a Cream crackle glaze. This portable is fitted with a wooden cap and base, White empire shade made from faux silk (with a textured slub), and fixed with an Aged Brass finial. Assembled in England. LS3034

**Elstead Lighting**

Elstead Lighting
Elstead House
Mill Lane
Alton, GU34 2QJ,
United Kingdom

Phone

+48 124441091

Email

enquiries@elsteadlighting.com