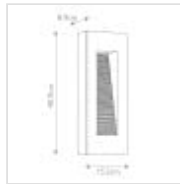
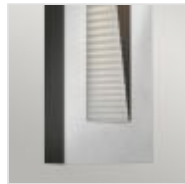


## HK-LUNA-M-TT

Luna Medium LED Wall Light - Titanium

DETAILS	
BRAND	Hinkley
FAMILY	Luna
SUITABLE LOCATION	Exterior
GUARANTEE	3 Year Anti Corrosion Guarantee
IP RATING	IP44
FINISH	Titanium
FITTING HEIGHT	409mm
WIDTH	152mm
PROJECTION/DEPTH	89mm
POWER SOURCE	Mains Voltage
VOLTAGE	220-240v 50hz
MAXIMUM WATTAGE	8W LED
NUMBER OF LAMPS	2
SOCKET	GU10
INTEGRATED LED	Yes
LED LUMENS	560Lm Each
LED COLOUR TEMP	3000k
CLASS	Class I
BUILD MATERIALS	Aluminium, Etched Glass
HOURS	25,000
DIMMABLE FITTING	Compatible With Dimmable Lamps
PRODUCT WEIGHT	2.52kg
BOX DIMENSIONS	41 X 16 X 11cm
BOX WEIGHT	2.80 Kg



## PRODUCT DETAILS

RETIRING COLLECTION MODEL - CHECK STOCK AVAILABILITY. Luna is a modern collection of sleek wall lights made from solid aluminium. These fittings are supplied with retrofit LED lamps in the textured, sloped section as well as a retrofit LED down lighter underneath the product. These models are ideal for a dark sky location, and are available in two finishes; Titanium and Satin Black. IP44 rated.



### Elstead Lighting

Elstead Lighting  
Elstead House  
Mill Lane  
Alton, GU34 2QJ,  
United Kingdom

### Phone

+48 124441091

### Email

enquiries@elsteadlighting.com