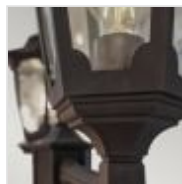




**PR8-BLACK**  
Parish 2 Light Twin Lamp Post - Black

DETAILS	
BRAND	Elstead Lighting
FAMILY	Parish
SUITABLE LOCATION	Exterior
GUARANTEE	10 Year Anti Corrosion Guarantee
IP RATING	IP44
FINISH	Black
FITTING HEIGHT	2280mm
DIAMETER	650mm
WIDTH	650mm
POWER SOURCE	Mains Voltage
VOLTAGE	220-240v 50hz
MAXIMUM WATTAGE	60W
NUMBER OF LAMPS	2
SOCKET	E27
INTEGRATED LED	No
CLASS	Class I
BUILD MATERIALS	Cast Aluminium, Glass
DIMMABLE FITTING	Compatible With Dimmable Lamps
PRODUCT WEIGHT	10.08kg
BOX DIMENSIONS	74 X 41 X 41cm
BOX WEIGHT	11.20 Kg



## PRODUCT DETAILS

The Parish lantern collection offer a blend of minimal, elegant styling with fine attention to detail and quality. Manufactured in the UK from die-cast aluminium and glass, they are offered in a Black powder-coated finish. Guaranteed for 10 years. Made in England.