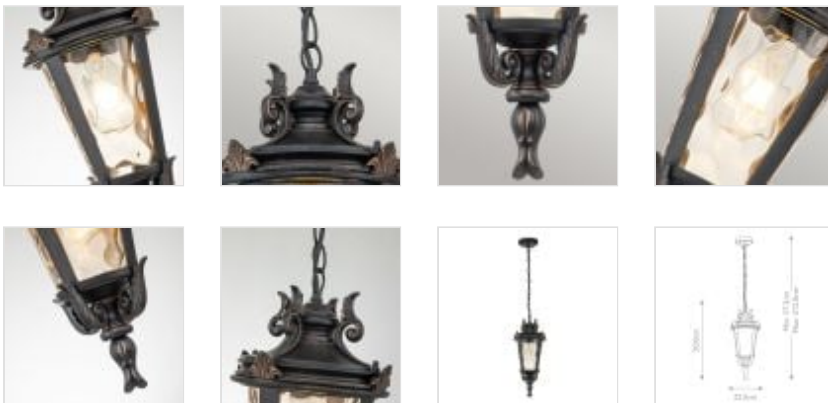


BT8-M

Baltimore 1 Light Medium Chain Lantern -
Weathered Bronze



DETAILS	
BRAND	Elstead Lighting
FAMILY	Baltimore
SUITABLE LOCATION	Exterior
GUARANTEE	3 Year Anti Corrosion Guarantee
IP RATING	IP44
FINISH	Weathered Bronze
FITTING HEIGHT	500mm
DIAMETER	225mm
WIDTH	225mm
MINIMUM DROP	575mm
MAXIMUM DROP	2120mm
POWER SOURCE	Mains Voltage
VOLTAGE	220-240v 50hz
MAXIMUM WATTAGE	60W
NUMBER OF LAMPS	1
SOCKET	E27
INTEGRATED LED	No
CLASS	Class I
BUILD MATERIALS	Cast Aluminium, Mottled Glass
DIMMABLE FITTING	Compatible With Dimmable Lamps
PRODUCT WEIGHT	2.52kg
BOX DIMENSIONS	23 X 23 X 48cm
BOX WEIGHT	2.80 Kg

**PRODUCT DETAILS**

A family of "period style" medium and large size lanterns with fine leaf finial details. This range covers pedestal, lamp-post, wall and suspended applications. Each product is offered with amber tinted blown glass and is hand finished in a Weathered Bronze Patina.

**Elstead Lighting**

Elstead Lighting
Elstead House
Mill Lane
Alton, GU34 2QJ,
United Kingdom

Phone

+48 124441091

Email

enquiries@elsteadlighting.com