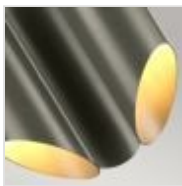


**QUINTO3-GPN**

Quinto 3 Light Chandelier - Dark Grey Polished Nickel

DETAILS	
BRAND	Elstead Lighting
FAMILY	Quinto
SUITABLE LOCATION	Interior
GUARANTEE	General 2 Year Guarantee
FINISH	Dark Grey Polished Nickel
FITTING HEIGHT	496mm
DIAMETER	268mm
MINIMUM DROP	488mm
MAXIMUM DROP	1552mm
POWER SOURCE	Mains Voltage
VOLTAGE	220-240v 50hz
MAXIMUM WATTAGE	8W
NUMBER OF LAMPS	3
SOCKET	E27
INTEGRATED LED	No
CLASS	Class I
BUILD MATERIALS	Mild Steel
DIMMABLE FITTING	Compatible With Dimmable Lamps
PRODUCT WEIGHT	3.1kg
BOX DIMENSIONS	55.9 X 29.2 X 21cm
BOX WEIGHT	3.44 Kg

**PRODUCT DETAILS**

RETIRING COLLECTION MODEL - CHECK STOCK AVAILABILITY. The comprehensive Quinto Grey collection designed by Elstead Lighting puts a sophisticated, modern spin on task-style lighting. A two-tone painted and metal plated finish provides unique character in Grey/Polished Nickel. Table, floor and wall options offer great functionality, whilst the ceiling products are statement pieces with bold silhouettes.

**Elstead Lighting**

Elstead Lighting  
Elstead House  
Mill Lane  
Alton, GU34 2QJ,  
United Kingdom

**Phone**

+48 124441091

**Email**

enquiries@elsteadlighting.com