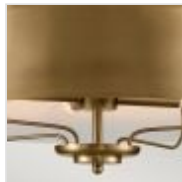
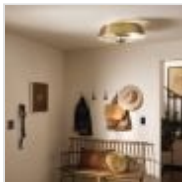


**KL-LUELLA-4P-BNB**

Luella 4lt Duo-Mount Pendant - Brushed Natural Brass

**DETAILS**

<b>BRAND</b>	Kichler
<b>FAMILY</b>	Luella
<b>SUITABLE LOCATION</b>	Interior
<b>GUARANTEE</b>	General 2 Year Guarantee
<b>FINISH</b>	Brushed Natural Brass
<b>FITTING HEIGHT</b>	210mm
<b>DIAMETER</b>	559mm
<b>MINIMUM DROP</b>	230mm
<b>MAXIMUM DROP</b>	1144mm
<b>POWER SOURCE</b>	Mains Voltage
<b>VOLTAGE</b>	220-240v 50hz
<b>MAXIMUM WATTAGE</b>	40W
<b>NUMBER OF LAMPS</b>	4
<b>SOCKET</b>	E14
<b>INTEGRATED LED</b>	No
<b>RODS SUPPLIED</b>	2 X 152mm & 2 X 304mm Rods
<b>CLASS</b>	Class I
<b>BUILD MATERIALS</b>	Steel
<b>SHADE MATERIAL</b>	Steel
<b>DIMMABLE FITTING</b>	Compatible With Dimmable Lamps
<b>PRODUCT WEIGHT</b>	2.6kg
<b>BOX DIMENSIONS</b>	61 X 61 X 27.5cm
<b>BOX WEIGHT</b>	4.40 Kg



## PRODUCT DETAILS

The Luella collection is delicate elegance. Inspired by decorative elements found on early twentieth century lighting, Luella is refined simplicity and timeless grace. Finish options include either fully finished in warm Brushed Natural Brass, or with the sleek metal shade finished in striking Black. Easily convert Luella from semi flush to pendant with the included stem.



### **Elstead Lighting**

Elstead Lighting  
Elstead House  
Mill Lane  
Alton, GU34 2QJ,  
United Kingdom

### **Phone**

+48 124441091

### **Email**

[enquiries@elsteadlighting.com](mailto:enquiries@elsteadlighting.com)