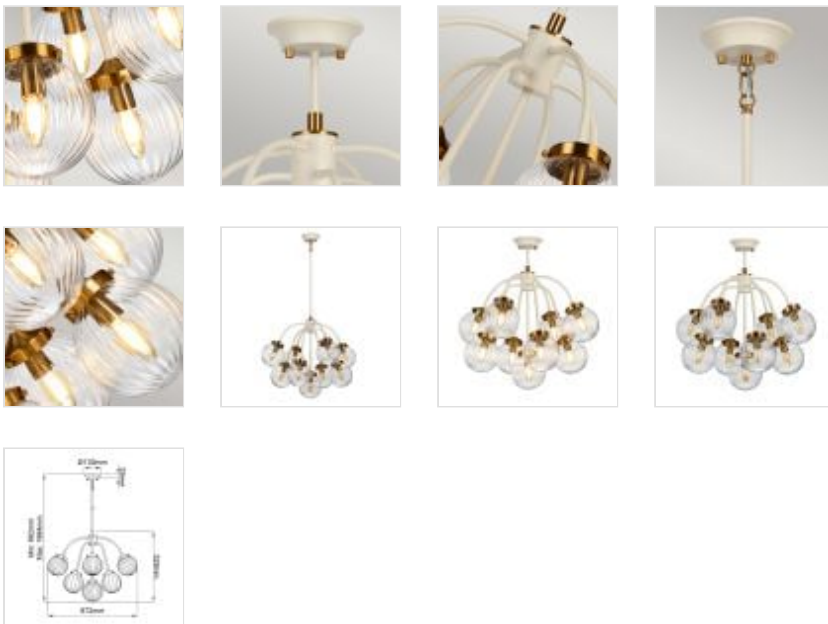




DL-COSMOS9
Cosmos 9 Light Pendant - Cream Painted and Aged Brass

DETAILS	
BRAND	Elstead Lighting
FAMILY	Cosmos
SUITABLE LOCATION	Interior
GUARANTEE	General 2 Year Guarantee
FINISH	Cream Painted And Aged Brass
FITTING HEIGHT	529mm
DIAMETER	672mm
WIDTH	672mm
MINIMUM DROP	662mm
MAXIMUM DROP	1664mm
POWER SOURCE	Mains Voltage
VOLTAGE	220-240v
MAXIMUM WATTAGE	8W LED
NUMBER OF LAMPS	9
SOCKET	E14
INTEGRATED LED	No
RODS SUPPLIED	2 X 305mm, 2 X 152mm And 1 X 100mm Rods
CLASS	Class I
BUILD MATERIALS	Steel, Clear Ribbed Glass
DIMMABLE FITTING	Compatible With Dimmable Lamps
PRODUCT WEIGHT	7.83kg
BOX DIMENSIONS	56 X 65 X 48cm
BOX WEIGHT	8.70 Kg



PRODUCT DETAILS

Cosmos combines a playful mix of retro style with sophisticated classic detailing. Contrasting cream and aged brass metal merges with the soft blown glass shades, giving your interior both a classic statement yet also a refined touch.



Elstead Lighting
Elstead Lighting
Elstead House
Mill Lane
Alton, GU34 2QJ,
United Kingdom

Phone
+48 124441091

Email
enquiries@elsteadlighting.com