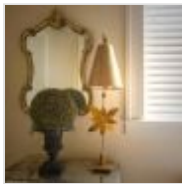


FB-AZALEA-TL-GD**Azalea 1 Light Table Lamp - Gold Leaf**

DETAILS	
BRAND	Flambeau
FAMILY	Azalea
SUITABLE LOCATION	Interior
GUARANTEE	General 2 Year Guarantee
FINISH	Gold Leaf
FITTING HEIGHT	860mm
WIDTH	305mm
POWER SOURCE	Plug
VOLTAGE	220-240v 50hz
MAXIMUM WATTAGE	60W
NUMBER OF LAMPS	1
SOCKET	E27
INTEGRATED LED	No
CLASS	Class I
BUILD MATERIALS	Steel
DIMMABLE FITTING	Compatible With Dimmable Smart Lamps
PRODUCT WEIGHT	3.83kg
BOX DIMENSIONS	35 X 78 X 36cm
BOX WEIGHT	4.25 Kg

**PRODUCT DETAILS**

RETIRING COLLECTION MODEL - CHECK STOCK AVAILABILITY. Azalea features a full bloom with matching Silver or Gold Leaf finish mountings, columns, and accents. This portable table lamp is topped with a matching tapered shade.

**Elstead Lighting**

Elstead Lighting
Elstead House
Mill Lane
Alton, GU34 2QJ,
United Kingdom

Phone

+48 124441091

Email

enquiries@elsteadlighting.com