

**FB-BIRDLAND-TL**

Birdland 1 Light Table Lamp - Cream & Gold  
with Cream and Taupe Striped Shade



DETAILS	
BRAND	Flambeau
FAMILY	Birdland
SUITABLE LOCATION	Interior
GUARANTEE	General 2 Year Guarantee
FINISH	Cream & Gold
FITTING HEIGHT	1143mm
WIDTH	229mm
PROJECTION/DEPTH	229mm
POWER SOURCE	Plug
VOLTAGE	220-240v 50hz
MAXIMUM WATTAGE	60W
NUMBER OF LAMPS	1
SOCKET	E27
INTEGRATED LED	No
CLASS	Class I
BUILD MATERIALS	Steel, Crystal
SHADE MATERIAL	Parchment
DIMMABLE FITTING	Compatible With Dimmable Smart Lamps
PRODUCT WEIGHT	4.05kg
BOX DIMENSIONS	36 X 36 X 102cm
BOX WEIGHT	4.50 Kg

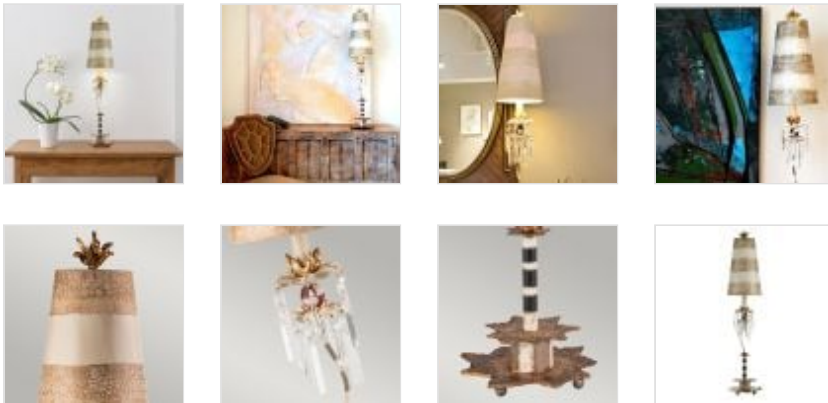
**PRODUCT DETAILS**

Table lamp with crackled putty finish. Gold leaf, and cream stripes detail the shade above a mélange of narrowing striped stems in a washed finish. This portable is adorned with K9 cut glass accents on a two-tier star-shaped base. LS329



**Elstead Lighting**  
Elstead Lighting  
Elstead House  
Mill Lane  
Alton, GU34 2QJ,  
United Kingdom

**Phone**  
+48 124441091

**Email**  
enquiries@elsteadlighting.com