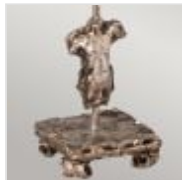


FB-FRAGMENT-TL-S**Fragment 1 Light Table Lamp - Aged Silver****DETAILS**

BRAND	Flambeau
FAMILY	Fragment
SUITABLE LOCATION	Interior
GUARANTEE	General 2 Year Guarantee
FINISH	Aged Silver
FITTING HEIGHT	977mm
WIDTH	216mm
PROJECTION/DEPTH	216mm
POWER SOURCE	Plug
VOLTAGE	220-240v 50hz
MAXIMUM WATTAGE	60W
NUMBER OF LAMPS	1
SOCKET	E27
INTEGRATED LED	No
CLASS	Class I
BUILD MATERIALS	Mild Steel
DIMMABLE FITTING	Compatible With Dimmable Smart Lamps
PRODUCT WEIGHT	2.34kg
BOX DIMENSIONS	30 X 30 X 82cm
BOX WEIGHT	2.60 Kg

**PRODUCT DETAILS**

RETIRING COLLECTION MODEL - CHECK STOCK AVAILABILITY. The Fragment table lamp brings a touch of the old to modern style. Designer Paul Gruer was influenced by the French Market in New Orleans, collecting unique treasures and combining them with simple drum shades. Each portable is hand-painted with gold or silver leaf and glazed to showcase its artistic flair.

**Elstead Lighting**

Elstead Lighting
Elstead House
Mill Lane
Alton, GU34 2QJ,
United Kingdom

Phone

+48 124441091

Email

enquiries@elsteadlighting.com