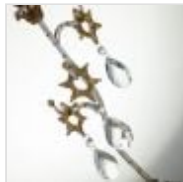
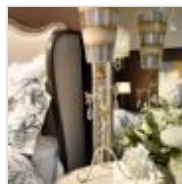




FB-TIVOLI-TL-SV
 Tivoli 1 Light Table Lamp - Silver & Cream
 Patina

DETAILS	
BRAND	Flambeau
FAMILY	Tivoli
SUITABLE LOCATION	Interior
GUARANTEE	General 2 Year Guarantee
FINISH	Silver & Cream Patina
FITTING HEIGHT	965mm
WIDTH	229mm
PROJECTION/DEPTH	292mm
POWER SOURCE	Plug
VOLTAGE	220-240v 50hz
MAXIMUM WATTAGE	60W
NUMBER OF LAMPS	1
SOCKET	E27
INTEGRATED LED	No
CLASS	Class I
BUILD MATERIALS	Steel
DIMMABLE FITTING	Compatible With Dimmable Smart Lamps
PRODUCT WEIGHT	3.06kg
BOX DIMENSIONS	94 X 39 X 35.5cm
BOX WEIGHT	3.40 Kg



PRODUCT DETAILS

RETIRING COLLECTION MODEL - CHECK STOCK AVAILABILITY. Inspired by Tivoli Gardens in Denmark, the Tivoli table lamp captures charm and individuality. The Cream and Silver stripes are hand painted on tapered shades and crystals hang from the curvy arms of this stunning portable.



Elstead Lighting
 Elstead Lighting
 Elstead House
 Mill Lane
 Alton, GU34 2QJ,
 United Kingdom

Phone
 +48 124441091

Email
 enquiries@elsteadlighting.com