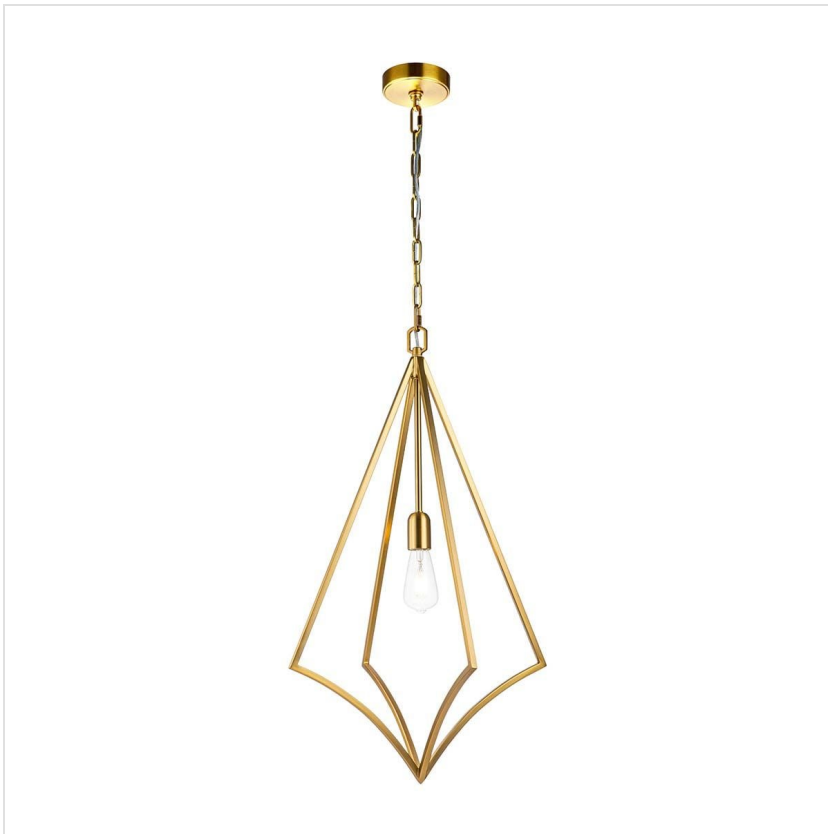


FE-NICO-P-L-BB**Nico 1 Light Large Pendant - Burnished Brass**

DETAILS	
BRAND	Generation Lighting (Feiss)
FAMILY	Nico
SUITABLE LOCATION	Interior
GUARANTEE	General 2 Year Guarantee
FINISH	Burnished Brass
FITTING HEIGHT	813mm
DIAMETER	489mm
WIDTH	489mm
MINIMUM DROP	908mm
MAXIMUM DROP	2474mm
POWER SOURCE	Mains Voltage
VOLTAGE	220-240v 50hz
MAXIMUM WATTAGE	60W
NUMBER OF LAMPS	1
SOCKET	E27
INTEGRATED LED	No
CLASS	Class I
BUILD MATERIALS	Steel
DIMMABLE FITTING	Compatible With Dimmable Lamps
PRODUCT WEIGHT	4kg
BOX DIMENSIONS	42 X 42 X 86cm
BOX WEIGHT	4.87 Kg

PRODUCT DETAILS

The large Nico pendant feature a cage profile with dramatic geometric flair. Clean lines seamlessly transition into curves, which all meet at a perfect point by using superior hand-welding techniques. The exposed bulbs are central to the design, so Edison-style LED bulbs are a perfect choice. Finished in Burnished Brass.

**Elstead Lighting**

Elstead Lighting
Elstead House
Mill Lane
Alton, GU34 2QJ,
United Kingdom

Phone

+48 124441091

Email

enquiries@elsteadlighting.com