

# ELSTEAD LIGHTING | DRYDEN

These classically designed products are manufactured to the highest standards and will give many years of service due to the quality solid brass materials used. Featuring a variety of styles and glass designs, these fittings are available in a mix of Polished Chrome, Polished Nickel, and Polished Brass finishes. All of the fittings are IP44 rated, and come supplied with LED G9 lamps.

**BRAND**

Elstead Lighting

**GUARANTEE**

General 2 Year  
Guarantee



**BATH-DRYDEN1-PB**

Dryden 1 Light Wall Light - Polished Brass



**BATH-DRYDEN2-PB**

Dryden 1 Light Wall Light - Polished Brass LED G9



**BATH-DRYDEN1-PC**

Dryden 1 Light Wall Light - Polished Chrome



**BATH-DRYDEN2-PC**

Dryden 1 Light Wall Light - Polished Chrome LED G9



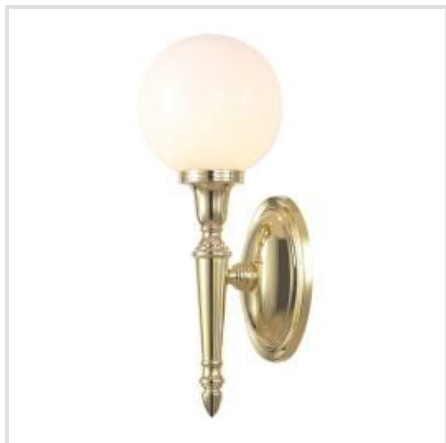
**BATH-DRYDEN1-PN**

Dryden 1 Light Wall Light - Polished Nickel



**BATH-DRYDEN2-PN**

Dryden 1 Light Wall Light - Polished Nickel LED G9



**BATH-DRYDEN4-PB**

Dryden 1 Light Wall Light Bathroom -  
Polished Brass



**BATH-DRYDEN4-PC**

Dryden 1 Light Wall Light Bathroom -  
Polished Chrome



**Elstead Lighting**

Elstead Lighting  
Elstead House  
Mill Lane  
Alton, GU34 2QJ,  
United Kingdom

**Phone**

+48 124441091

**Email**

[enquiries@elsteadlighting.com](mailto:enquiries@elsteadlighting.com)