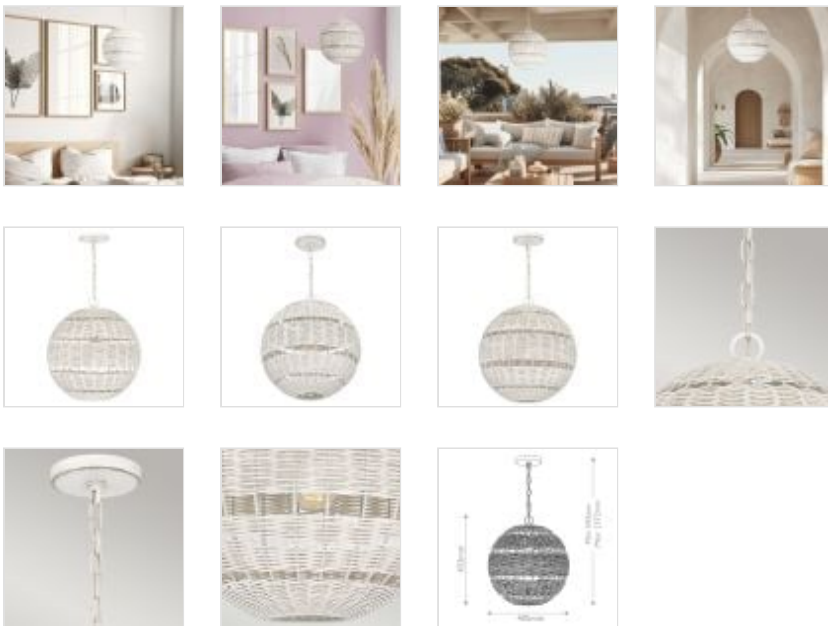




QZ-LINDENDALE-P-AWH

Lindendale 1 Lt Pendant - Antique White

DETAILS	
BRAND	Quoizel
FAMILY	Lindendale
SUITABLE LOCATION	Exterior
GUARANTEE	General 2 Year Guarantee
IP RATING	IP44
FINISH	Antique White
FITTING HEIGHT	433mm
DIAMETER	405mm
WIDTH	405mm
MINIMUM DROP	543mm
MAXIMUM DROP	2372mm
POWER SOURCE	Mains Voltage
VOLTAGE	220-240v 50hz
MAXIMUM WATTAGE	60W
NUMBER OF LAMPS	1
SOCKET	E27
INTEGRATED LED	No
CLASS	Class I
BUILD MATERIALS	Steel, Faux Rattan, Glass
SHADE MATERIAL	White Rattan With Clear Glass Inside
DIMMABLE FITTING	Not Dimmable
PRODUCT WEIGHT	3.8kg
BOX DIMENSIONS	44 X 44 X 55cm
BOX WEIGHT	5.30 Kg



PRODUCT DETAILS

Rattan never goes out of style, especially outdoors. The Lindendale pendant harps on the staying power of woven synthetic materials with its Noguchi-inspired shape. This fresh and airy antique white pendant is IP44 rated for outdoor use too.



Elstead Lighting

Elstead Lighting
Elstead House
Mill Lane
Alton, GU34 2QJ,
United Kingdom

Phone

+44 (0) 1420 82377

Email

enquiries@elsteadlighting.com